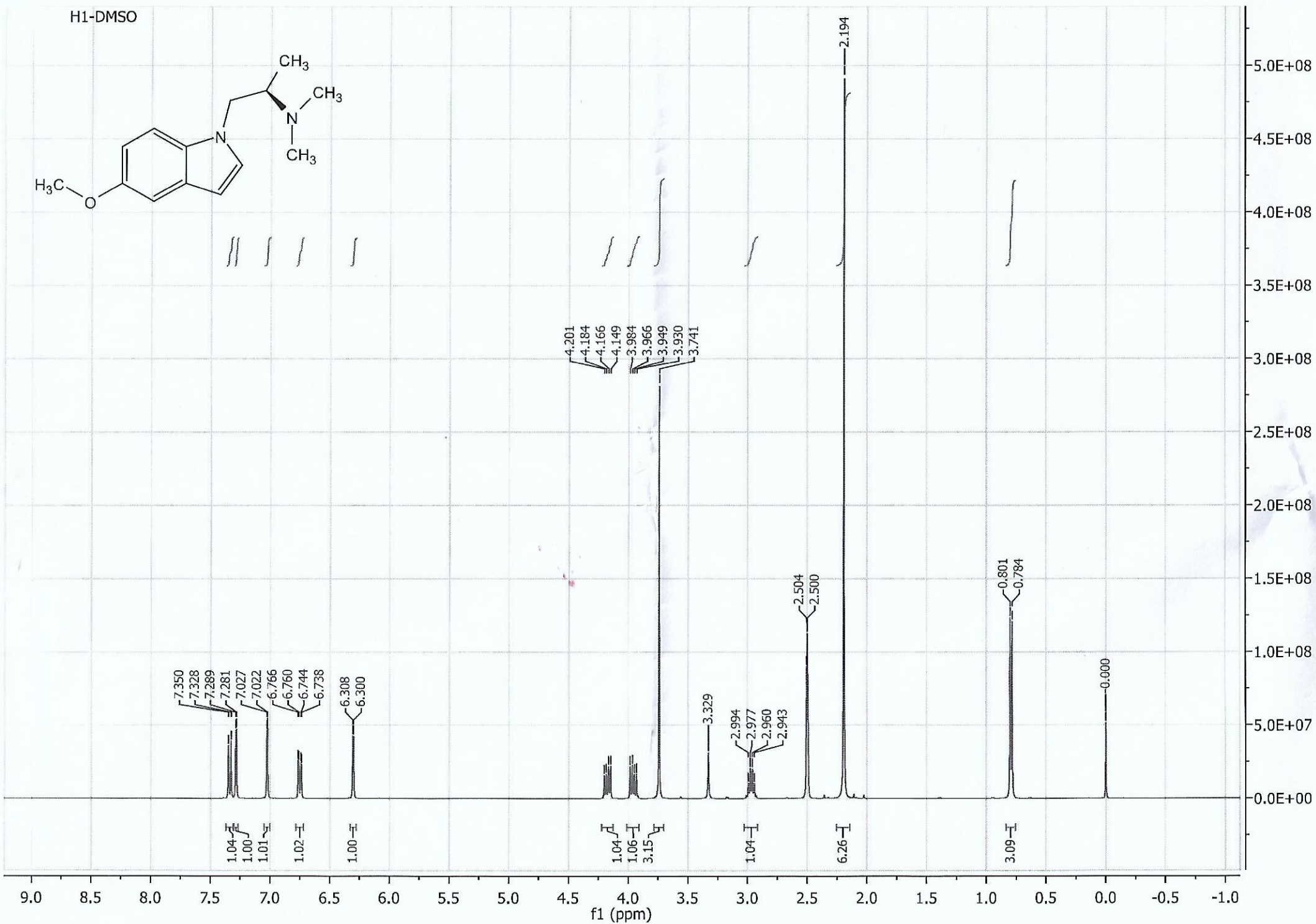
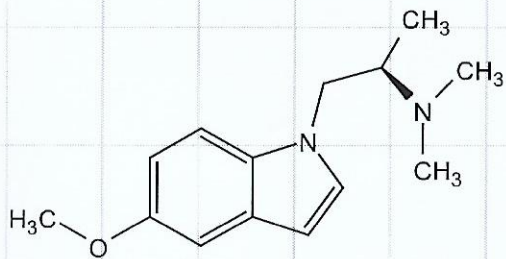
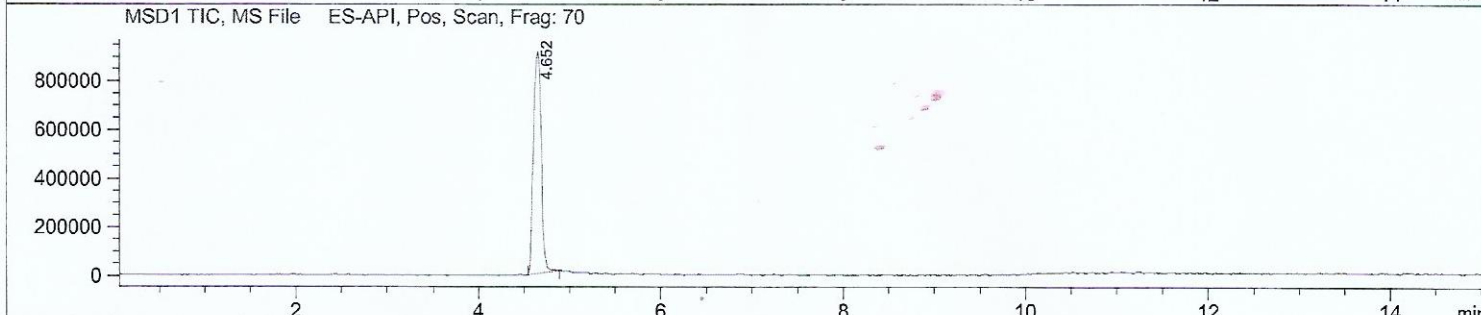
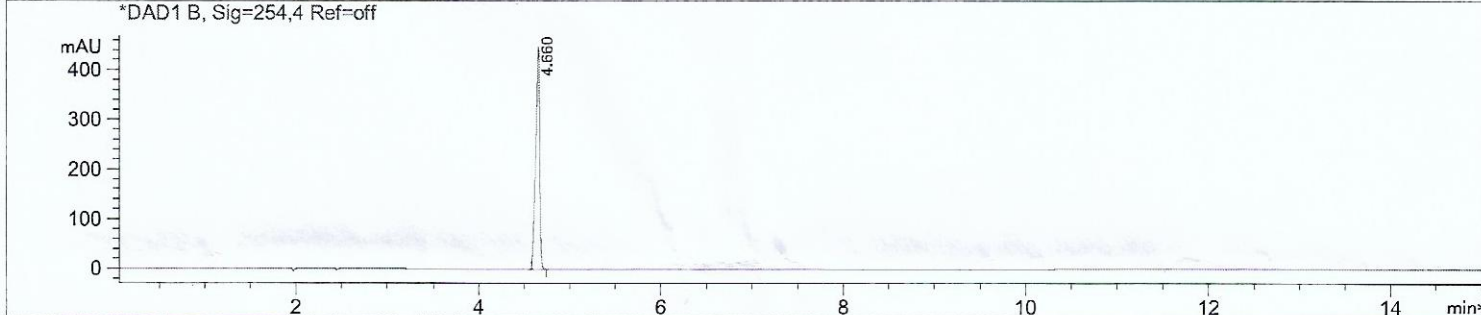
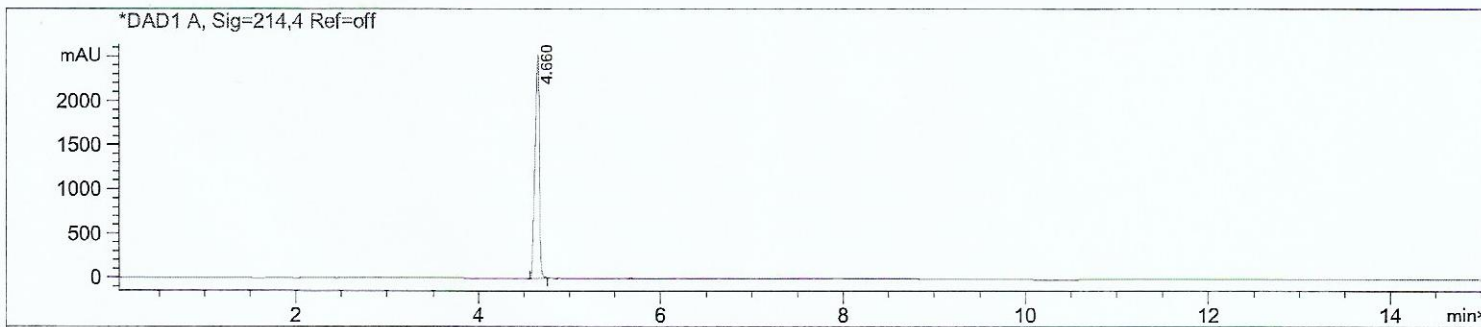


H1-DMSO



Method Info : Mobile Phase: A: water(0.01%TFA) B: ACN(0.01%TFA)  
 Gradient: 5%B increase to 95%B within 8 min, 95%B for 7 min.  
 Flow Rate: 1.0ml/min  
 Column:YMC-Pack Pro C18,4.6\*150mm,3 um  
 Column Temperature: 40C  
 Detection:UV(214,4nm) and MS(ESI,Pos mode,110 to 1500 amu)



Integration Results for DAD1 A, Sig=214,4 Ref=off

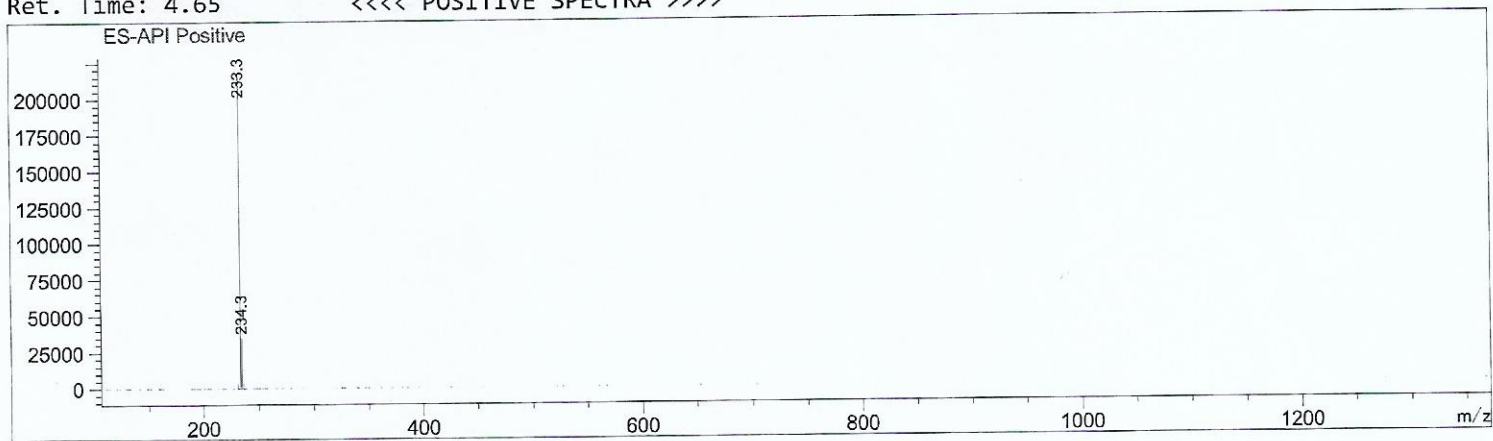
RetTim	Width	Area	Height	Area%
4.66	0.05	8236.14	2520.20	100.00

Integration Results for DAD1 B, Sig=254,4 Ref=off

RetTim	Width	Area	Height	Area%
4.66	0.04	1303.92	446.87	100.00

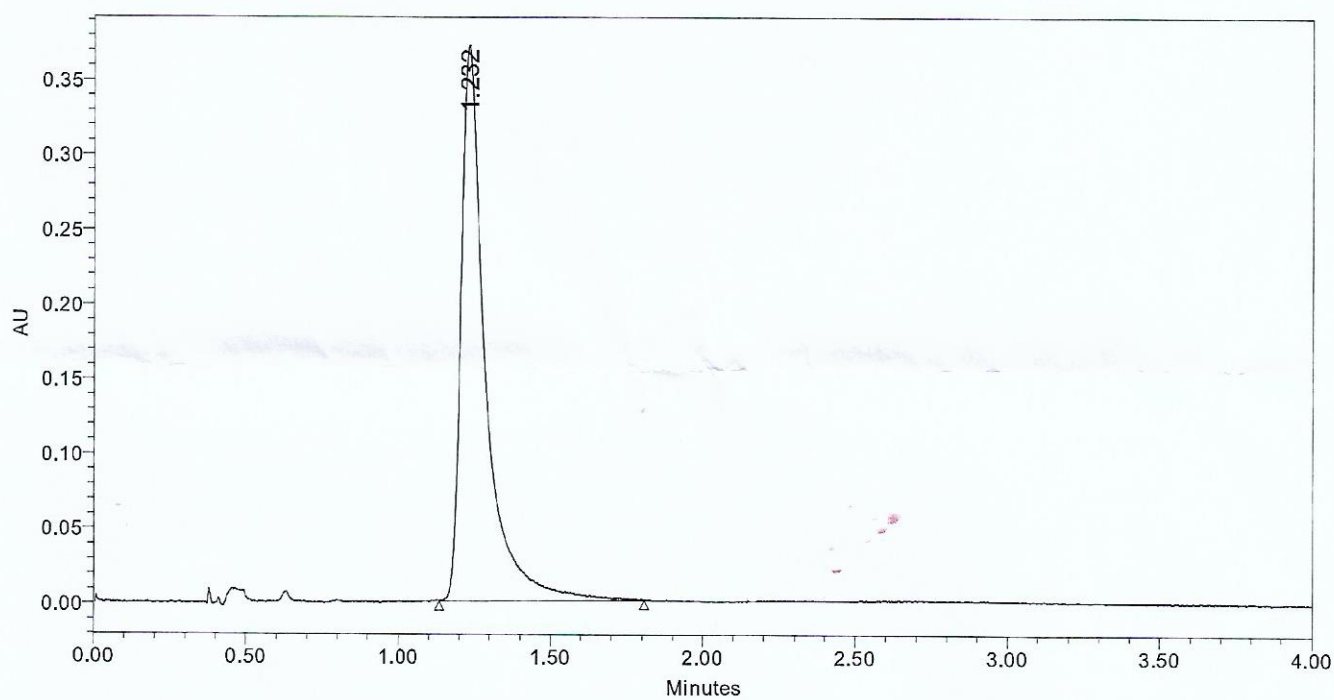
Ret. Time: 4.65

<<<< POSITIVE SPECTRA >>>>



Acq. Method Set: 30% B1  
Co\_Solvent: MeOH[0.2%NH3(7M in MeOH)]  
Channel Name: PDA Ch1 214nm@4.8nm  
Proc. Chnl. Descr.: PDA Ch1 214nm@4.8nm

Vial: 1:A,8  
Injection Volume: 5.00 ul  
Run Time: 5.0 Minutes  
Flow\_rate: 3.0 mL/min  
Back\_Pressure: 2000 psi  
Column\_Temperature: 40°C



	RT	Area	% Area	Height
1	1.232	2054863	100.00	371334